

MINERAL EXPLORE



MINING SOLUTIONS PTY LTD

PORTFOLIO





INTRODUCTION

Mineral Explore Mining Solutions (MEMS), with BEE status, was established in 2015 in the Northern Cape, with the sole intent to deepen and broaden the surface and underground exploration services currently available in South Africa and Africa, premised on its current and collective experience in the South African mining industry.

We are an innovative company, continuously striving to upgrade and modify our equipment, providing a consistently superior and professional service. Our operations comply with both industry and safety standards with local, national and international companies.

Our specialist team is motivated, experienced, exposed to most mining conditions and knowledgeable on various drilling and support equipment. We have the added benefit of experienced personnel, formerly employed by Arindel and Blue Chip Mining.

Our primary aim is to assure customer satisfaction. Our management team has more than thirty years' combined experience in the industry and offers each contract personal and detailed attention.



VISION:

To become the South African mineral exploration company in mining, extracting results at any depths with exceptional precision to optimize planning and development in order to satisfy the expectations of clients, whilst maintaining high safety and environmental standards.



VALUES:

We belief and commit to the following values:

- **Trust:** An open relationship with our employees based on mutual trust, respect and success.
- **Honesty:** We take responsibility and keep our promises and deadlines.
- **Respect:** Uncompromising commitment to quality, health safety and environment.
- **Reliability:** Impose clear and uniform rules upon our sites and ensure their compliance.
- **Integrity:** Absolute integrity in all we do.
- **Unity:** To work in harmony.

Service Philosophy:

Deliver on evenly balanced relationships by providing quality, reliability and personalized detailed attention.



MISSION STATEMENT

1. Service Delivery

- To provide an exceptional exploration service.
- To ensure efficient services, whilst minimising financial losses and enhancing our clients corporate image.
- To deliver an accurate and accountable service.
- To break barriers in the delivery and quality of exploration results.

2. Client is key

- To exceed the expectations of our clients
- To ensure and maintain a professional client relationship.

3. Safety compliant

- To create a safe work environment for all employees.
- To comply with NOSA standards.
- To draft the best safety policies, practices and procedures.

4. Sales and Knowledge

- To employ well trained, experienced and professional staff to remain the best in our field.
- To share relevant knowledge and skills.
- To evolve and constantly develop current skills in an ever changing and competitive environment.



5. Environmental Sustainability

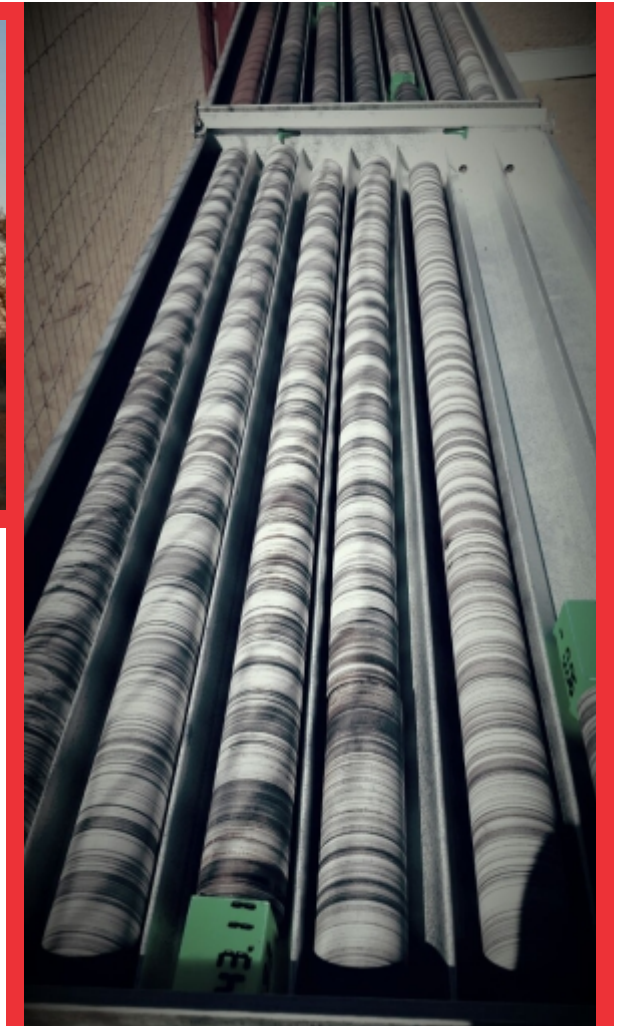
- Comply with the relevant environmental laws and regulations.
- Minimize negative environmental impact.
- Minimize the over use of natural resources.
- Raise awareness of environmental sustainability.

6. Community Development

- Commitment to support local business ventures to add value to our local economy.
- Enhance the social cultural status of the local community.

7. Ethics

- To create a social acceptable moral and value system.





METHOD STATEMENT AND OPERATING PROCEDURES:

- MEMS has developed Standard Work/ Operating Procedures (SWP) SOP for all areas of operations. These SWP's (SOP's) are in line with relevant National and Industry specific legislation such as the Mining Health and Safety Regulations.
- All employees are fully trained on such and constant on the job training and coaching is conducted to ensure the continuous understanding of what is needed, what method to use and by when this should be completed.
- We create a sound environment to the client that the targets will be met, in the safest, cost effective and economic way.

BUSINESS OBJECTIVE:

- To become a mineral exploration service in mining, satisfying the expectations of clients and MEMS itself, including those relevant to the industry.



CORE SERVICES:

- Percussion drilling
- Surface wire-line diamond core drilling
- Reverse circulation
- Geo-technical drilling
- Grade control
- De-watering and water control: surface and underground
- Pre-cementation and collar grouting
- Ground improvement stability support.
- Underground core drilling



ACCOMPLISHMENTS

As a management team, our health and safety accomplishments during a sub-contract through Blue Chip Mining with Eramet and BHP Billiton, have earned us the following successes:

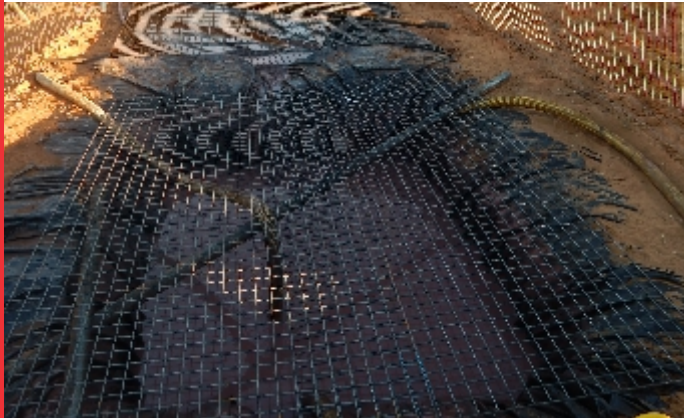
- A recommendation from the DMR (Department of Minerals and Resources) for our high standards of environmental, safety, and rehabilitation on the Makulu and Belgravia sites.
- A recommendation from Eramet South Africa for our excellent safety and workmanship standards.
- We achieved 14 400 hours without Lost Time Injuries up to 14 August 2015.
- We were the preferred core drilling contractor for Eramet.
- We reached continuous high scores for internal and external audits of safety and housekeeping.
- We were chosen as the best site on Mamatwan for safety and housekeeping during the months; October, November, and December 2014.
- During the subcontract through Blue Chip Mining on Mamatwan, we achieved a core recovery of 98% while on site in November 2014. This was the best result accomplished by an outsourced company for BHP Billiton.

HEALTH, SAFETY AND ENVIRONMENT

- The Management of MEMS is without doubt committed to the protection of our environment and to ensure responsible environmental awareness by limiting the impact of our activities on our environment.
- MEMS acknowledge the fact that through environmental conservation and protection practices they contribute to the wellbeing of all people and the future of the world we all must share. Environmental awareness initiatives will be practiced and communicated to our employees on a continual basis. We are committed to continuing minimization of our environmental impact and carbon footprint by following principles:

HEALTH, SAFETY AND ENVIRONMENT:

- Actively promote internal recycling and power saving initiatives.
- Actively promote amongst its customers and suppliers by increasing procurement of environmentally friendly and recyclable products;
- Minimize and treat any spillage or waste in line with best practices;
- Minimize toxic emissions through the selection and use of its fleet and the source of its power requirement;
- Meet or exceed all the environmental legislation that relates to the Company
- Support responsible environmental champions and charities within the community in which we operate.



THE TEAM



Viaghn Osmers
Chief Executive Officer



Mannie(Johann) Wessels
Compliance Manager



Nancy Machaba
Corporate Manager



Hannes van der Merwe
Safety and Logistics Manager



Johann Osmers
Project Manager: Drilling



Marina Osmers
Marketing



Karien Prinsloo
Admin Administrator

RECOMMENDATION LETTER



4th Floor, 82 Grayston Drive, Off Esterhuysen Street, Sandton
P.O. Box 782103, Sandton, 2146, South Africa
Tel: +27 (11) 779 6800
Fax: +27 (11) 983 0036
Registration No: 2012 / 012528 / 07

FROM: Julien CONTE
Project Manager
ERAMET SOUTH AFRICA (Pty) Ltd

TO: Whom it may concern

RE: Letter of Recommendation

DATE: 15 October 2015

This is a letter of recommendation for Mr. Viagh Alexander Osmers, owner of Arindel Drilling (Arindel).

I have had the pleasure of working with Arindel on the Mukulu Mine / Eramet project from 2012 to 2015.

Arindel provided exploration drilling support for the project which involved reverse circulation, percussion and core drilling.

I was impressed with the professional manner of Arindel who worked diligently, supported each other seamlessly and communicated well with the team to successfully complete the project.

I can state with confidence that Arindel is a highly motivated organization that demonstrates a strong work ethic and adherence to safety standards.

Based on my observations, Arindel takes the initiative to identify problems and formulate solutions to challenges that inevitably occur in a complex project on a daily basis. Arindel regularly made adjustments to manpower and materials procurement to improve production and productivity in order to meet the project deadlines.

The success of any complex project depends in a large measure on the team's ability to communicate and work collaboratively and unselfishly towards the project goals. Arindel was excellent in their contribution to the success of the Mukulu Mine/ Eramet Project.

I therefore recommend Arindel without reservation and would welcome their contribution for any future project work.

Your inquiries are invited.

Sincerely,
Best regards,

Julien CONTE
Project Manager

PROJECT
EXPERIENCE
BY
TEAM

TIME PERIOD

DESCRIPTION

CONTRACT
VALUE

Arindel
Eramet Contract
Phase 2

April 2015 to
September 2015

Geotechnical core Drilling
Reverse Circulation Drilling
Percussion Drilling

28 Holes
4 200m

Blue Chip Mining -
BHP Billiton Mamatwan

2014-2015

Diamond Drilling

1 000m

Blue Chip Mining
Arindel
Eramet Contract
Phase 1

July 2012 to
December 2014

Manganese and Iron ore,
Diamond Drilling,

42 Holes
8 970m Total

Windle Brow

February 2012

Geotechnical drilling
Reverse Circulation Drilling

1 200m

Anglovaal Witbank
Greenside Colliery

October 2011 to
December 2011

Reverse Circulation Drilling
Percussion Drilling
Diamond Drilling
On mine dumps

R2 m

Lafrage Evander

September 2011

Reverse Circulation Drilling
Percussion Drilling

R400 000,00

DCM Chrome

March 2010 to
February 2011

Reverse Circulation Drilling
Percussion Drilling
Diamond Drilling

R2,28 m

PROJECT BY MEMS	TIME PERIOD	DESCRIPTION	CONTRACT VALUE
Morokwa Mine	Current	Percussion Drilling	29 Holes 1 200m
HTH Drilling on Eramet Contract	24 January to 03 March 2016	Geotechnical Thrust Diamond Drilling Reverse Circulation Drilling Percussion Drilling	R2.8 m



EQUIPMENT AVAILABLE**NINE CORE RIGS AND TWO RC RIG, CONSISTING OF:**

Equipment	Specifications	Comments
Reverse Circulation Thor Drill Rig 6x6	Angle-adjustable tower, 30 ton pull back, air-conditioned, automatic rod handlers, mounted on MAN 6x6	Manufactured in 2015 and approved by Anglo American for safe working capabilities.
Compressor 4x4	IR 25 bar / 1070 CFM mounted on Merc 4x4	New 2015
4x LY50's	Trailer mounted Each Equipped 1,500 m BQ/NQ Rods, Tools, and accessories.	Rebuilt 2014 by PSJ Engineering to new specifications; new trailers and towers accommodating strenuous drilling conditions, able to move in the same manner as smaller rigs
1x New LY50	One new LY50 (as above) with original towers and equipment for drilling holes up to 3,000 m	Built by PSJ Engineering. August 2015
1x Ly44 2x XY44	6 cylinder Deutz, mounted on a trailer Up to 800 m BQ complete with Rods, Tools, and accessories Status: contracted to Eramet 1,100m BQ – 700m Rods, Tools, and accessories Status: available.	Rebuilt in October 2013 Refurbished in January to new specifications for use in smaller applications, but faster and stronger.

EQUIPMENT AVAILABLE

Equipment	Specifications
Percussion Rig 6x6	Super Rock 5000 Drill on Mercedes Truck 6x6 RC capable
Compressor 4x4	Mercedes Benz 1517 Truck 4x4 mounted Ingersoll Rand Compressor 1070
1x Boart Long Year LF90LS	Trailer Mounted Surface Hydraulic Core Drill. Complete with 600m NQ/BQ rods (new)
Service backup	Mercedes Benz truck 8ton 4x4 Mercedes Benz truck 5ton 4x2 Toyota Hino truck 8ton 4x4
Water Truck	Man 4x4 - 6000l
6x Trailor	1x 5000 Litre Double Axle Tanker Trailor 1x double axle 2 ton trailor 4x Single axle rod trailor
Dewatering	1x Trailer Mounted 30kw KSB Pump
1x Low bed	For Transport

OUR FLEET

- 3 4x4 Land Cruiser Service Vehicle
- 2 4x4 Toyota 2.5 Diesel Personnel Carriers
- 1 4x4 Ford 2.2 Service Vehicle
- 3 4x4 Toyota Double Cab 3l Service Vehicle
- 2 4x4 Toyota 3l d4d Service Vehicle



CONTACT US

OUR DIRECTORS:

Viaghn Osmers – Chief Executive Officer

Tel: 082 454 1212

Email: viaghn@mineralxplor.co.za

Nancy Machaba – Corporate Manager

Tel: 071 253 5227

Email: nancy@mineralxplor.co.za

Mannie Wessels – Compliance Manager

Tel: 079 198 5435

Email: mannie@mineralxplor.co.za

Our Office

Karien Prinsloo

Tel: 071 658 1006

Email: info@mineralxplor.co.za

Hannes van der Merwe – Safety and Logistics Manager

Tel: 082 490 7063

Email: hannes@mineralxplor.co.za

Johann Osmers – Project Manager: Drilling

Tel: 082 415 6080

Email: johann@mineralxplor.co.za

Yke Osmers – Project Manager: Mining Machinery

Tel: 082 444 6398

Email: info@mineralxplor.co.za



Mineral Explore Mining Solutions
Trading as **Mineral Explore**
Reg. No. 1986/000269/07